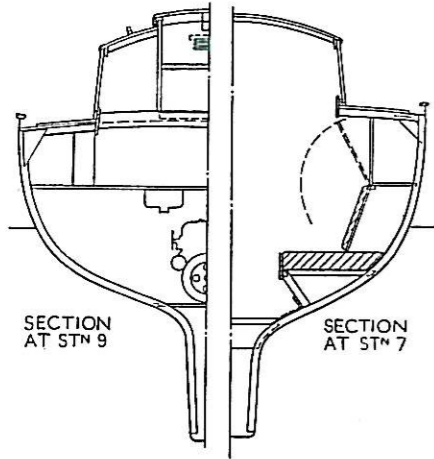


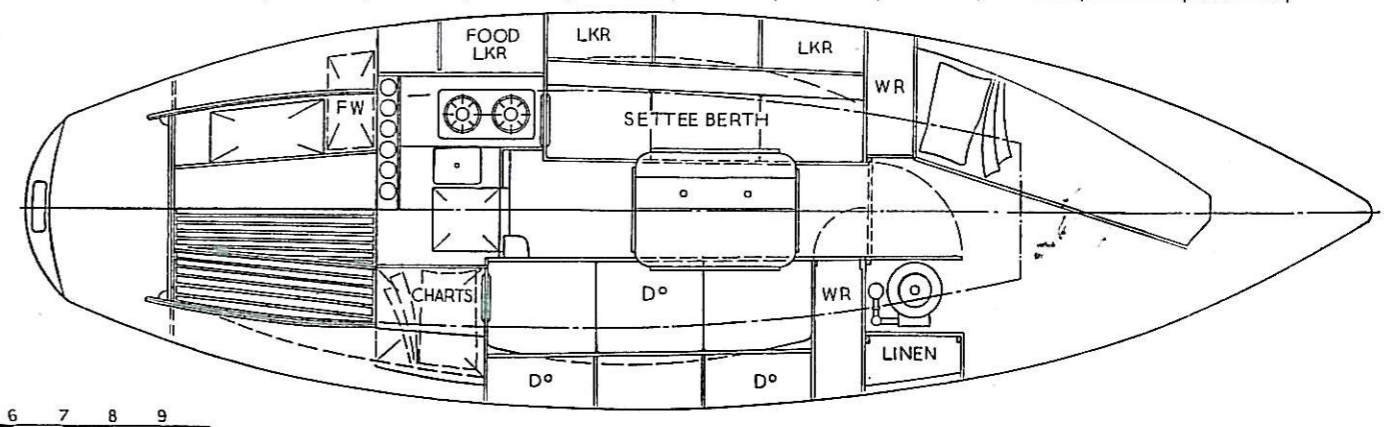
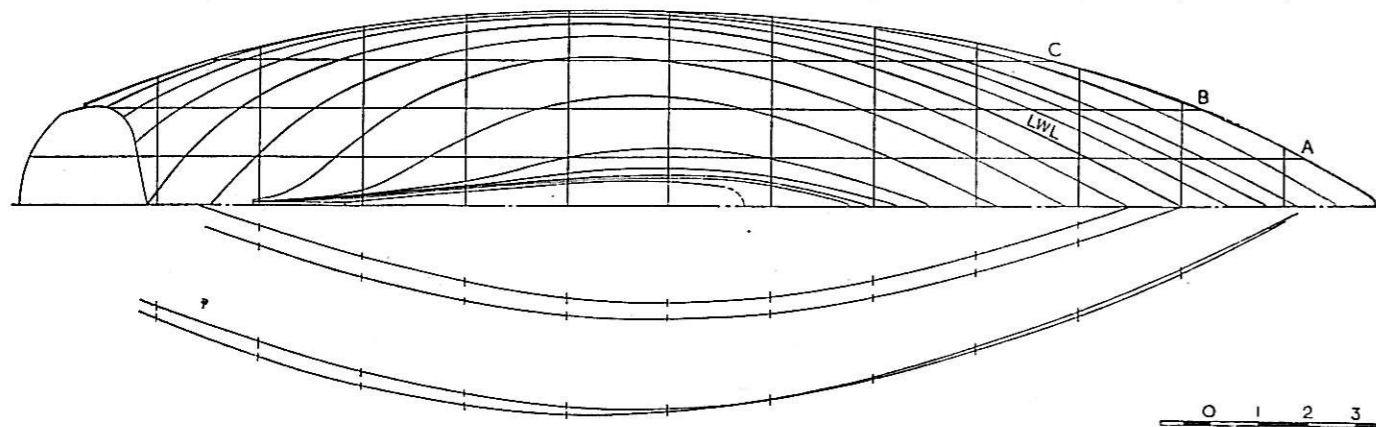
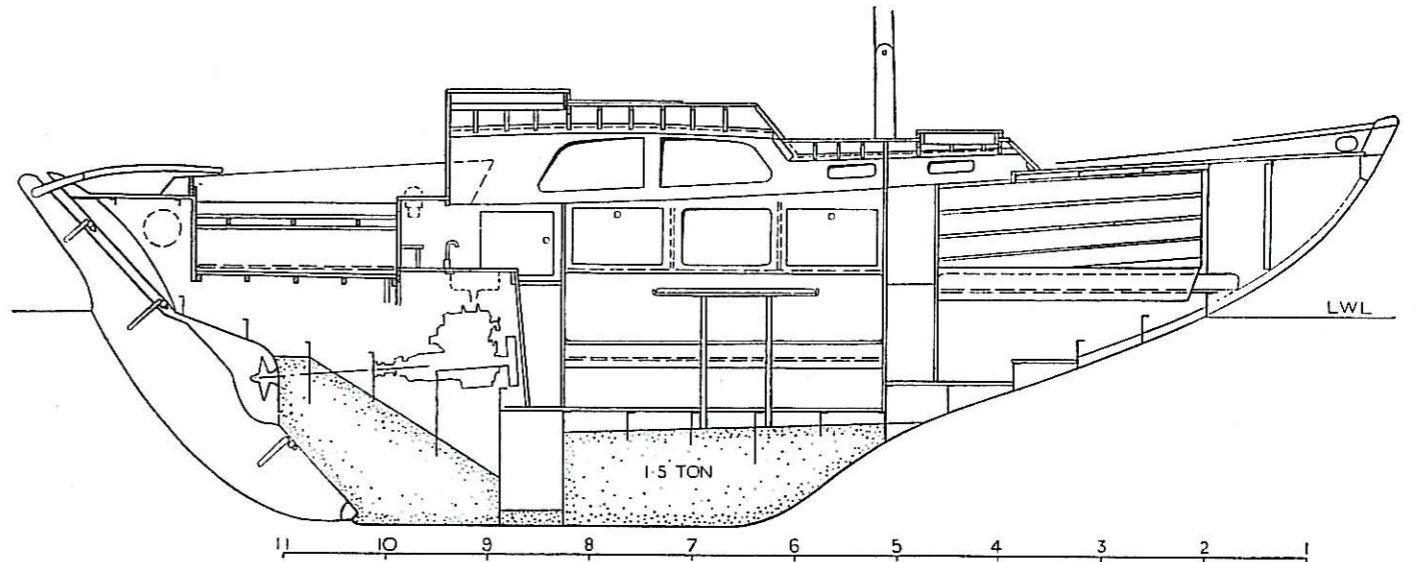
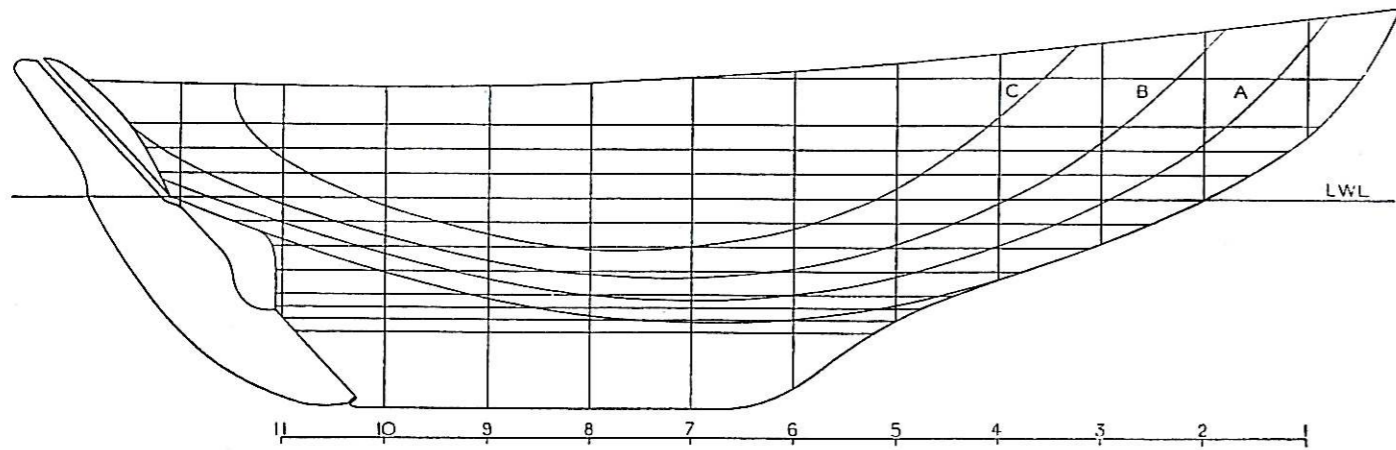
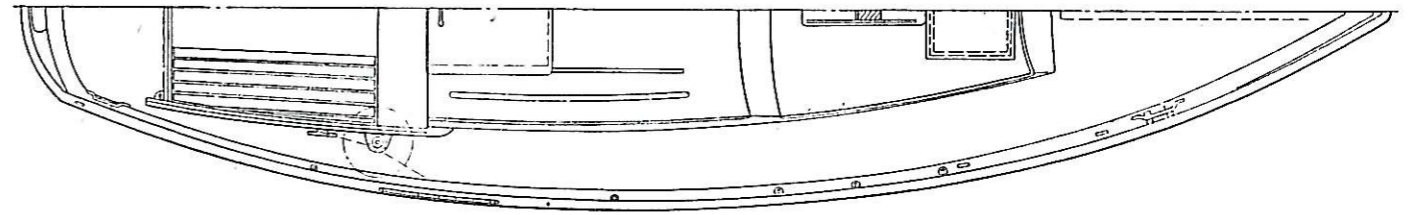
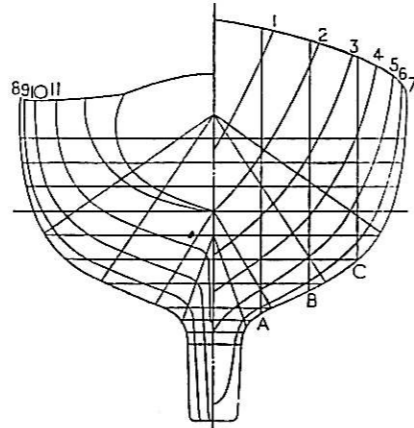
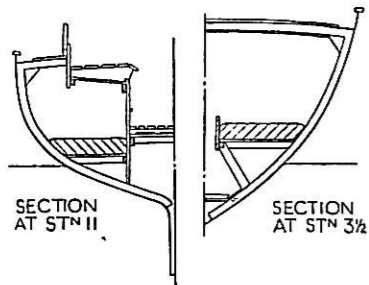
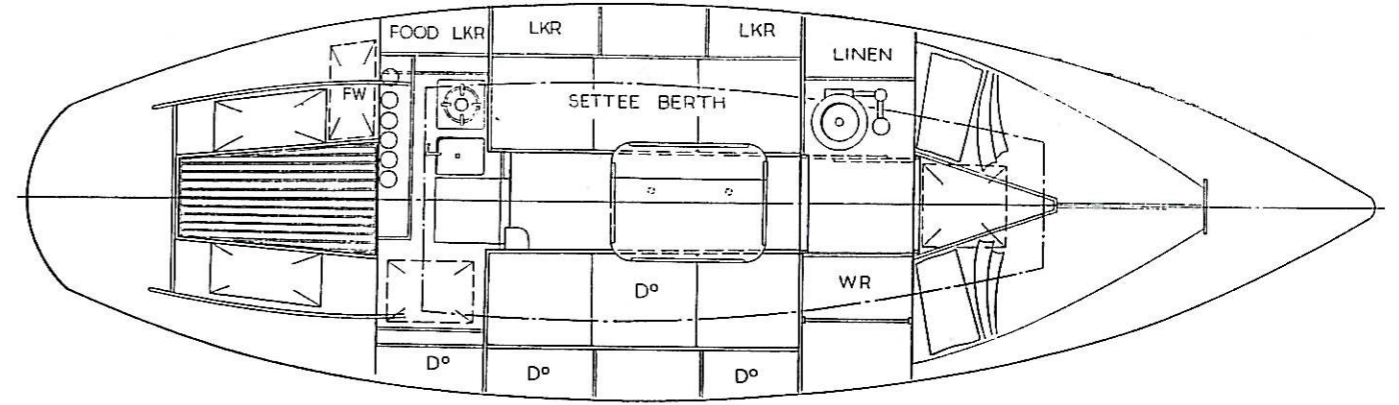
# TRINTEL

DESIGN BY E. G. VAN DE STADT



**SPECIFICATION**

**Ballast keel:** Iron in concrete 1.5 tons  
**Stem:** M.S. plate  
**Frames:** M.S. 40 by 40 by 4mm  
**Floors:** M.S. 4mm  
**Plating:** M.S. 3 and 4mm  
**Deck beams:** M.S. 40 by 20 by 4mm  
**Coamings:** Mahogany plywood  
**Deck:** Plywood  $\frac{3}{8}$  in thick  
**Fastenings:** Bronze in plywood; steel electrically welded, sand-blasted and zinc sprayed



0 1 2 3 4 5 6 7 8 9  
 FEET

These plans are the copyright of the designer, E. G. van de Stadt, Scheepswerf, N.V. Zaandam, Holland, from whom further information can be obtained.